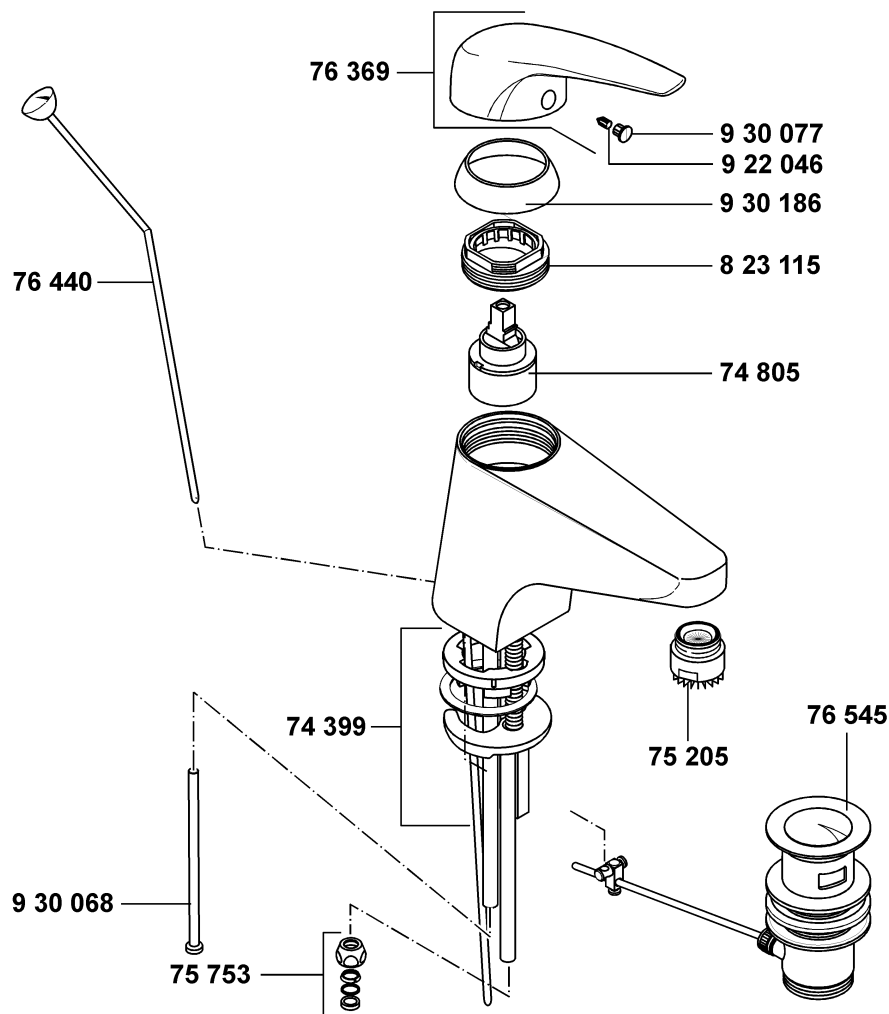
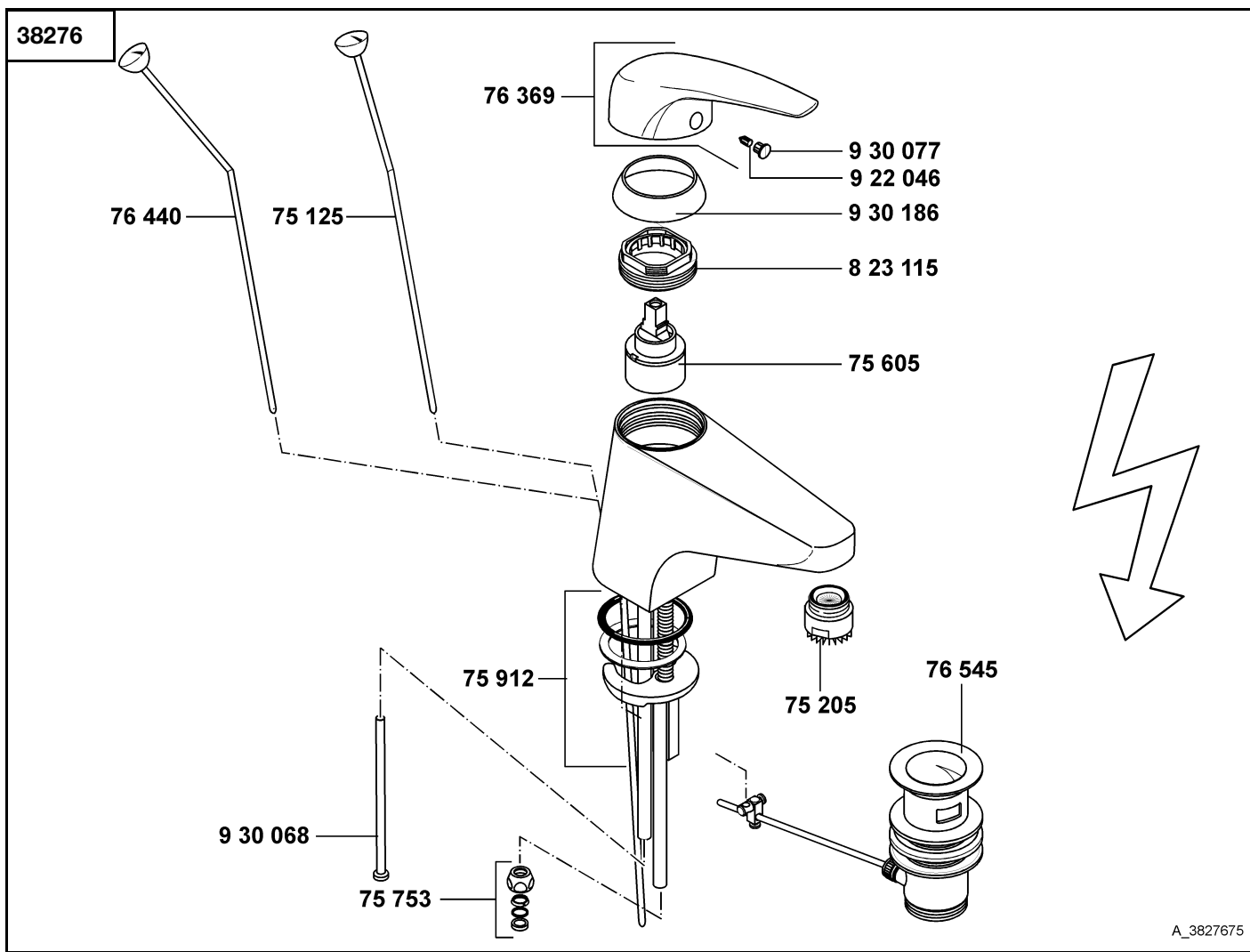


38276


A_382767A

| 38276 | 11/06 → Waschtisch-Einhandmischer DN 6 | single lever basin mixer DN 6 | ééngreeps wastafelmengkraan |
|---------|--|-------------------------------|-----------------------------|
| 74 399 | Befestigungssatz | assembling set | bevestigingsset |
| 74 805 | Steuereinheit K35 | cartridge K35 | cartouche K35 |
| 75 205 | Strahlregler M 24 x 1 | flow straightener M 24 x 1 | straalbreker M 24 x 1 |
| 75 753 | Quetschverschraubung | compression joint | klemkoppeling |
| 76 369 | Hebel, KLUDI LOGO MIX | lever for KLUDI LOGO MIX | greep voor KLUDI LOGO MIX |
| 76 440 | Zugstange geteilt | lift rod, separated | trekstang, gedeeld |
| 76 545 | Ablaufgarnitur | pop up waste | afvoergarnituur |
| 823 115 | Spannschraube | screw | spanschroef |
| 922 046 | Gewindestift | threading lathe | inbus schroef |
| 930 068 | Drosselschlauch | reducer pipe | reduceerslang |
| 930 077 | Markierungsstopfen | red/blue insert | markeringsstop |
| 930 186 | Abdeckkappe | cover cap | afdekkap |

KLUDI LOGO MIX



| 38276 | → 10/06 | Waschtisch-Einhandmischer DN 6 | single lever basin mixer DN 6 | ééngreeps wastafelmengkraan |
|-------|---------|--------------------------------|-------------------------------|-----------------------------|
| | 75 125 | Zugstange | lift rod | trekstang |
| | 75 205 | Strahlregler M 24 x 1 | flow straightener M 24 x 1 | straalbreker M 24 x 1 |
| | 75 605 | Kartusche | cartridge | cartouche |
| | 75 753 | Quetschverschraubung | compression joint | klemkoppeling |
| | 75 912 | Befestigungssatz | assembling set | bevestigingsset |
| | 76 369 | Hebel, KLUDI LOGO MIX | lever for KLUDI LOGO MIX | greep voor KLUDI LOGO MIX |
| | 76 440 | Zugstange geteilt | lift rod, separated | trekstang, gedeeld |
| | 76 545 | Ablaufgarnitur | pop up waste | afvoergarnituur |
| | 823 115 | Spannschraube | screw | spanschroef |
| | 922 046 | Gewindestift | threading lathe | inbus schroef |
| | 930 068 | Drosselschlauch | reducer pipe | reduceerslang |
| | 930 077 | Markierungsstopfen | red/blue insert | markeringsstop |
| | 930 186 | Abdeckkappe | cover cap | afdekkap |